



## ORGANIC

YES	NO	HOW
Food leftovers, fruit and vegetable waste, egg shells, coffee grounds, tea and infusion bags, dried flowers, compostable CIC-branded material.	Any non-organic waste (e.g. food containers, oven paper, aluminium foil, film, cutlery, medicines, nappies, gauzes and sticking plasters).	Organic waste must be placed in compostable bags made of organic material or paper.

## GLASS AND CANS

YES	NO	HOW
Glass packaging (bottles, jars and flasks) and steel and aluminium packaging (cans, tins, aluminium trays and foil, caps, aerosol canisters).	Pottery and porcelain, light bulbs, mirrors, crystal glass, TV or PC screens, Pyrex (ceramic glass), door and window glass, paint and solvent tins, T/F-labelled aerosol canisters.	Glass and cans must be placed in the waste container without plastic bags, containers must be emptied of all residues.

## THE CIDIU TOLL-FREE NUMBER 800-011651

The service is operational from Monday to Thursday, 8.30 a.m. - 4.30 p.m. and Friday from 8.30 a.m. - 3 p.m. Further information is available from your municipality.



Via Torino 9  
10093 Collegno (TO)

+39 011 4028111

[www.cidiuservizi.to.it](http://www.cidiuservizi.to.it)



© SIMONETSTUDIO

## ILLUSTRATED GUIDE

RECYCLING

TO SEPARATE

BENEFITS EVERYONE

## COLLECTION



PRINTED ON RECYCLED PAPER  
TOLL-FREE NUMBER 800-011651



# GUIDE TO SEPARATE URBAN WASTE COLLECTION

Legislation provides that urban waste must be separated, placing it in the correct household or road container. This guide explains how to separate waste correctly and which are the services available to citizens.



## PAPER AND CARDBOARD

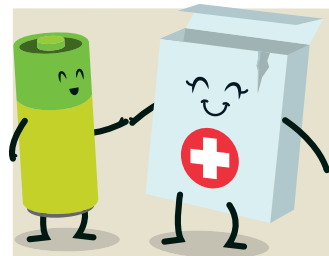
YES	NO	HOW
Newspapers, books, paper bags, paper, cardboard boxes, beverages cartons (Tetra Pak type).	Receipts, laminated paper, dirty paper, paper cups and plates.	The paper must be placed in the waste container loose, without plastic bags, cartons must be folded to reduce their volume.



## PLASTIC

YES	NO	HOW
All plastic packaging (e.g. bottles, jars, bags, polystyrene containers, film), as well as disposable plates and cups cleaned of food residue.	Plastic objects which are not packaging (e.g. basins, toys, rubber tubes).	Packaging must be emptied of its content and crushed to reduce its volume.

## HAZARDOUS WASTE



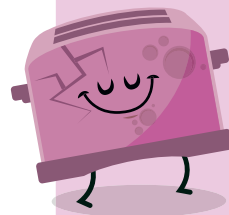
This is waste that contains substances constituting a hazard to human health or the environment.

Car batteries, paints, expired medicines, batteries, mineral oils, vegetable and animal oils and fats, insecticides, neon tubes, glues and solvents.

This waste must be taken to the EcoCentre (tip). Pharmacies normally have containers for the collection of expired medicines. Certain resellers have containers for the collection of used batteries

**To dispose of asbestos call the Cidiu toll free number 800-011651.**

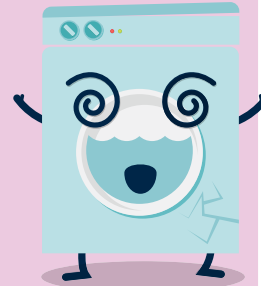
## WEEE AND BULKY WASTE



Waste Electrical and Electronic Equipment is devices which, in order to work, need electricity or batteries (e.g. household appliances, mobile phones, TVs, irons, toys, energy-saving bulbs).

Bulky waste is a type of waste which, due to its dimensions, cannot be placed in the road or household containers (e.g. mattresses, furniture).

**This waste must be taken to the EcoCentre (tip). In certain municipalities, a collection service (at street level) is available for bulky waste and large WEEE.**



## UNSEPARATED



All waste which cannot be allocated to separate waste collection goes in the grey waste container for residual unseparated waste, in well sealed bags.

## USED CLOTHES

Used clothes, blankets, backpacks, bags, curtains and pairs of shoes in good condition are collected in special containers placed on the roads and in EcoCentres.



## GRASS AND PRUNING CUTTINGS



Cidiu offers a subscription service for the collection of grass and pruning cuttings.

## MUNICIPAL ECOCENTRE (TIP)

This is an area where citizens can take waste which due to its type or dimensions cannot be placed in road or household containers. Waste must be taken to the EcoCentre with your own means and separated by type.

